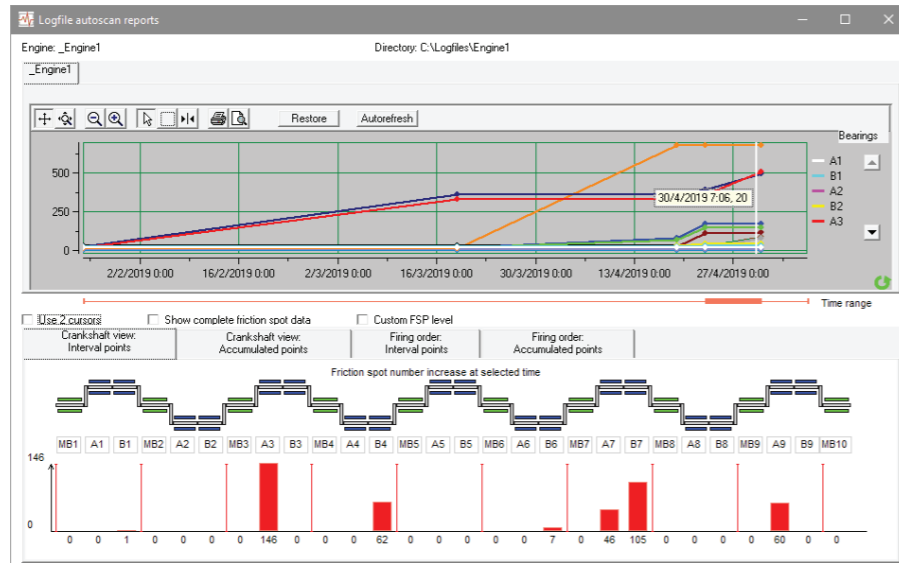


FRICITION SPOT DIAGRAM

The friction spot diagram displays accumulation of high thermo voltage signals for each bearing over time. Planning maintenance works for bearings with increasing friction spot trends helps to eliminate failures on early stages and, thus, to reduce the overall maintenance costs.



motcom® LOGANALYSER ADVANTAGES

- » Display and analysis of detailed data for engine diagnostics
- » Failure detection on early stage
- » Automated e-mail reports and notifications
- » Online and offline operating

SYSTEM REQUIREMENTS

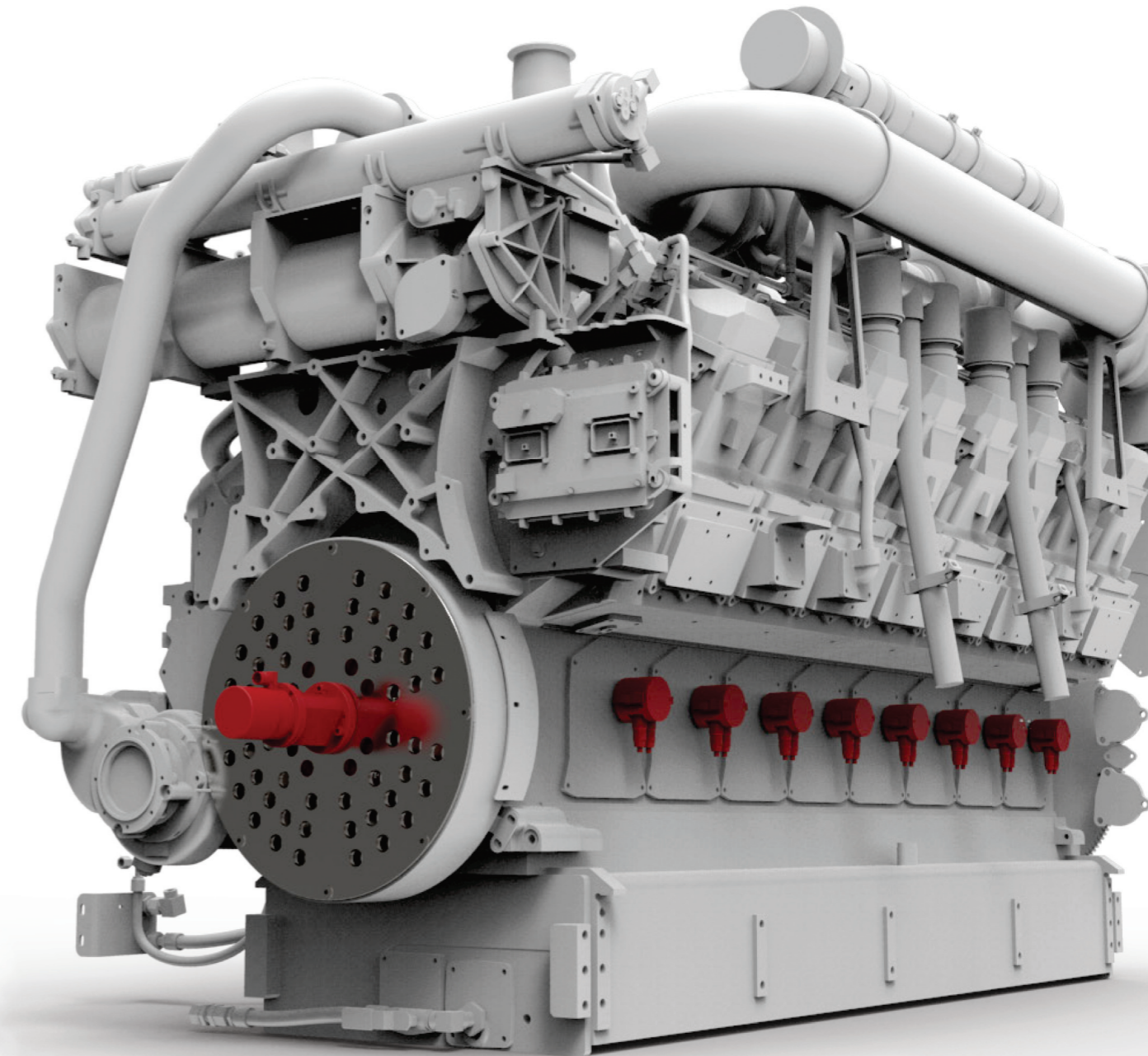
- » Dual- or multi-core processor 2.4 GHz or higher
- » 4 GB RAM
- » Screen resolution 1280 x 768 dots or higher, at least 256 colors
- » Supported operating systems: Microsoft Windows 7, Windows 8.x, Windows 10, Windows 11
- » Runs as a desktop application.
- » Internet connection is required for automatic e-mail notifications

motcom®, BeCOMS®, SiCOMS®, OQCOMS® are registered trade marks of motcom GmbH

motcom GmbH
Kurt-Schumacher-Str.28-30
D-66130 Saarbrücken

Phone +49 (0) 681 – 8837904-0
Fax +49 (0) 681 – 8837904-19
eMail info@motcomgmbh.com
Internet www.motcomgmbh.com

motcom® Loganalyser Flyer 230829-en

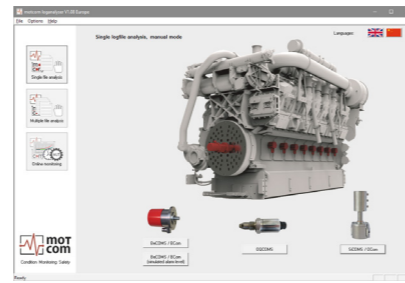


motcom®
**Loganalyser | Advanced analysis software
for engine condition monitoring**

motcom GmbH | Kurt-Schumacher-Str.28-30 | D-66130 Saarbrücken
Phone +49 (0) 681 – 8837904-0 | **Fax** +49 (0) 681 – 8837904-19
eMail info@motcomgmbh.com | **Internet** www.motcomgmbh.com

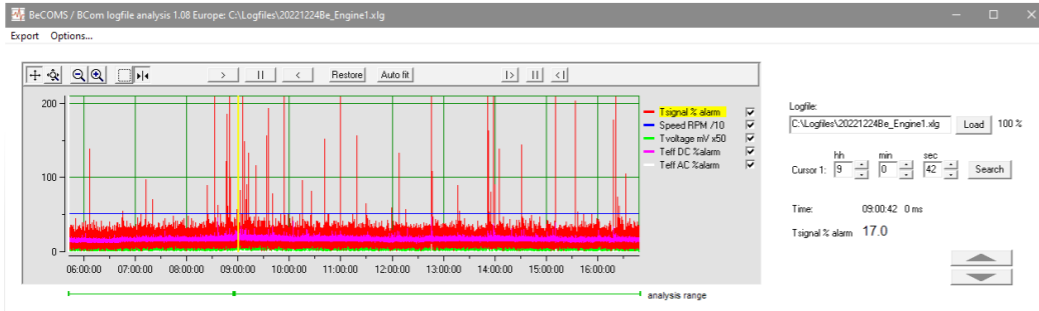
INTRODUCTION

The motcom loganalyser provides extended diagnostic functions for the BeCOMs®, SiCOMs® and OQCOMs® systems and helps to maintain engine health and safety. It offers offline logfile analysis with advanced methods of data evaluation, as well as online logfile monitoring and long-time trend observation. The online monitoring includes an e-mail alert system for periodical reporting and early diagnostic warnings.

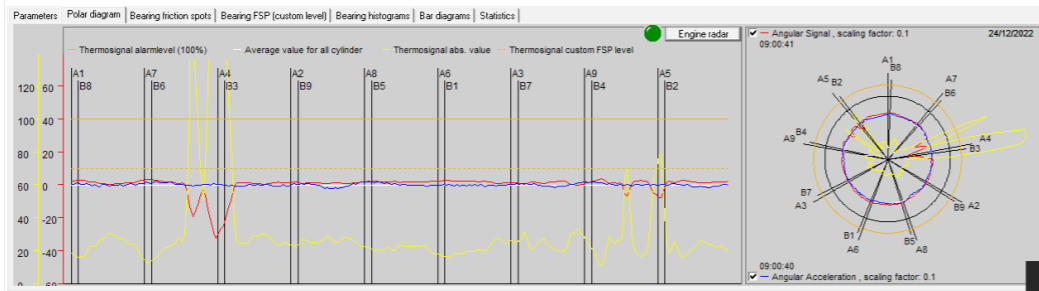


BeCOMs® SINGLE FILE ANALYSIS

Offline single logfile mode allows to select and review data samples at individual time points having all recorded data as a linear (timeline) graph:

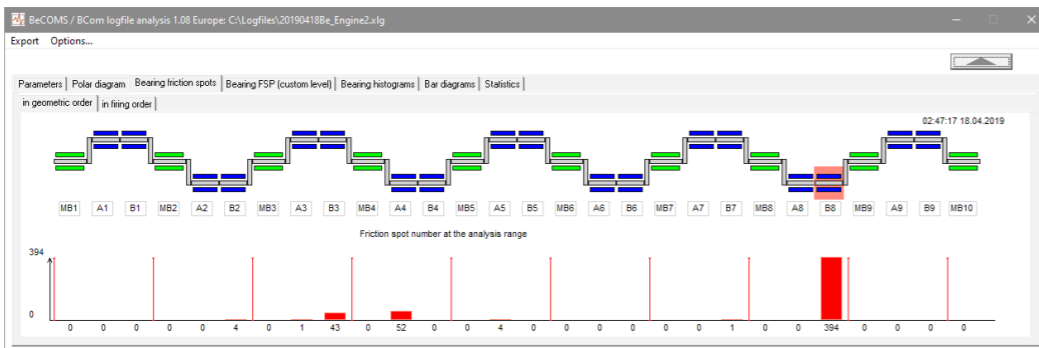


There are also polar data samples recorded when crankshaft rotates; they show angular thermosignal and acceleration during full engine combustion cycle at a selected time point:

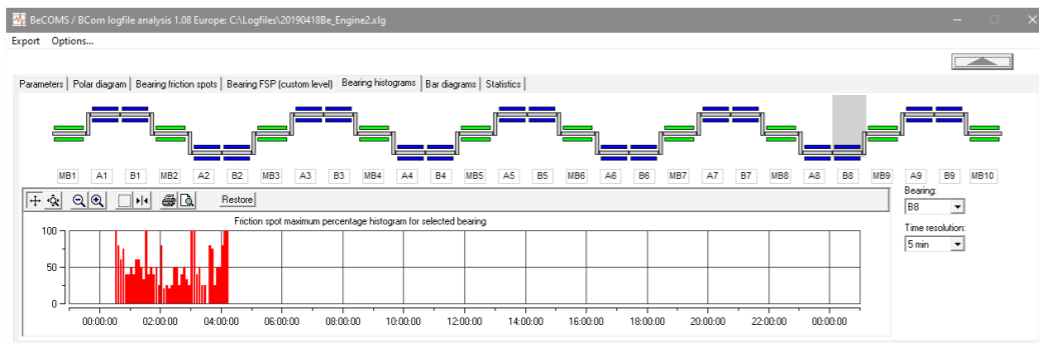


BEARING CONDITION

Evaluating friction spots (polar data samples with high thermosignal level) helps to locate bearings with impending problems long before critical damage. The crankshaft model with friction spot indicator highlights big end bearing A5:

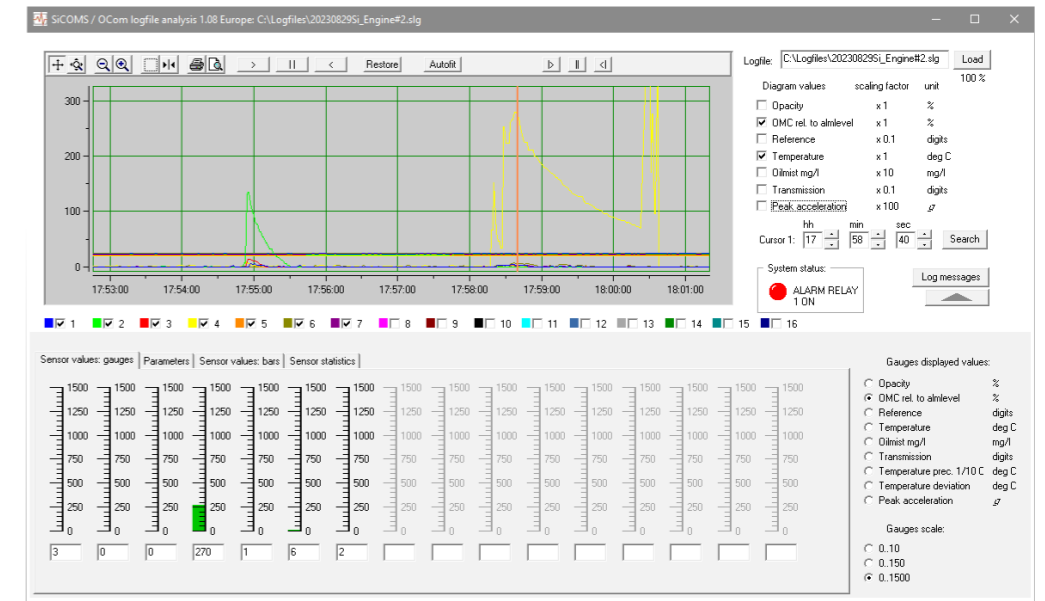


Time histogram of relative friction spot number for the selected bearing shows when exactly during logging the problematic signals were detected:



SiCOMs® SINGLE FILE ANALYSIS

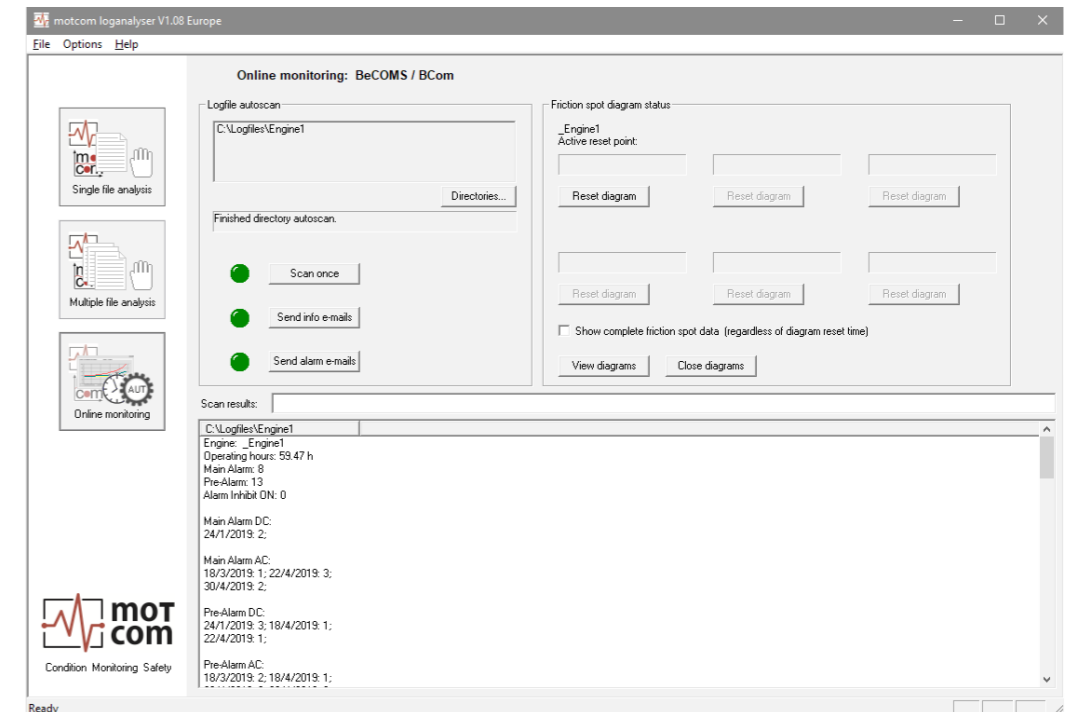
Recorded data from all sensors is displayed as a linear graph allowing individual time point selection:



The data at a selected point is represented digitally for each sensor, including COT temperature bar graphs:

ONLINE MONITORING

- » Selected logfile directories are scanned for new data periodically
- » Engine condition summary reports are generated which can be sent per e-mail automatically
- » Friction spot diagrams are shown as graphs
- » Engine statistics display can be reset to show only recent log data. It is possible to switch between full or recent reports



If required, automatic e-mail notifications can be sent to a list of e-mail recipients

